

CHURCH @ THE PARK



**COMMERCIAL
KITCHEN
PARTNERSHIP
OPPORTUNITIES**

**a banquet of love and
acceptance for those who need
it most**

People.

See People + Build Relationships



Guyne **Family Shelter Graduate**

Guyne and her family were some of our first residents at the CCS site. She worked hard with her case managers to obtain employment, get a vehicle, and even get connected with services that were not previously available to her due to her immigration status. She also started the citizenship process with funding help from C@P and other churches in the community. Because of her perseverance and hard work, she was recently able to get into an apartment with her family!



Tony **Adult Shelter Graduate**

Tony was at our first potluck meal at Cascade Gateway Park in 2007. He was an employee at C@P and helped us open the shelter at the Fairgrounds Pavilion. After the Pavilion shelter closed, Tony fell on hard times and returned to living in a tent. When he entered our shelter at Village of Hope, he immediately started working with his case manager on his goals, including obtaining permanent housing. After a few months at the shelter, Tony moved into his own apartment and remains stably housed!



Branden **Young Adult Program**

Branden found himself homeless after his girlfriend was killed in a car accident. He is enrolled in the Young Adult program to support 18-24 year olds find and maintain stable housing and employment. One of Branden's goals is to become a Firefighter and has applied to Chemeketa Community College for the fall term to start on this journey.



DJ'S CORNER

FOUNDER & CEO

By developing an on-site commercial kitchen, Church at the Park (C@P) will provide employment and skill-building opportunities to the Young Adults living at the shelter. Church at the Park will hire dedicated staff to will oversee various aspects of the kitchen operation. The kitchen manager will play a vital role in managing training, distribution, staffing, and other day-to- day operational tasks. The Chef will focus on crafting menus, overseeing food preparation and cooking, and providing essential training to support the development of the young adult residents at the site.

To supplement the chef's efforts, C@P will hire a small kitchen team with prior food service knowledge. These skilled individuals will assist the chef in cooking and food preparation while also supporting the growth and development of the young adult residents. Utilizing hot and cold vehicles, C@P will develop a distribution plan for delivering food to our other sites.

C@P will not only provide guests with a stable living situations at the shelter, but also support their long-term stability by offering employment, job development, and hand-on food service experience.

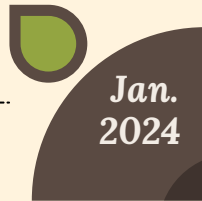
We need your help to start building this kitchen in January 2024!

Commercial Kitchen.

Creating workforce development opportunities for young adults experiencing homelessness.



Complete Fundraising for Capital Improvements



Begin permitting & land-use process



Begin Construction



Open kitchen & begin food production

PROJECT FUNDING STATUS

Secured:

- Murdock Charitable Trust: \$80,000
- Spirit Mountain Community Foundation: \$100,000

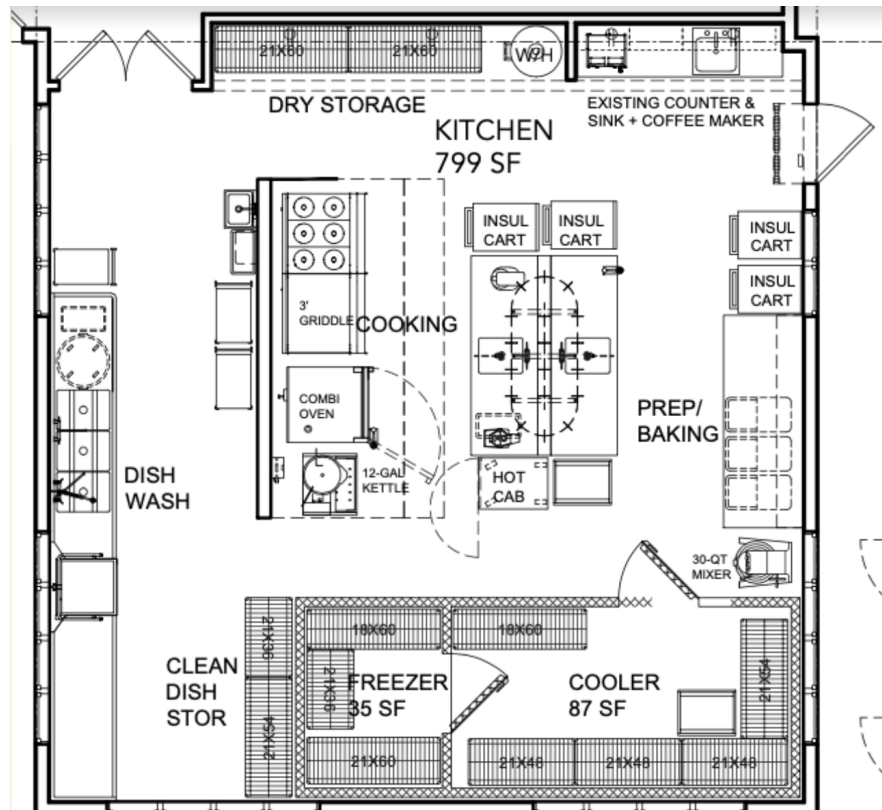
Investment Still Needed:

- Kitchen Equipment: \$425,000
- Facility Upgrades: \$100,000

DESIGN PARTNERS

CBTWO Architects

JBK Consulting & Design



Continuum of Support.



01. OUTREACH

C@P connects with 18-24 year olds who are unhoused throughout the Marion Polk region to begin providing support services and planning for long term housing, health, and employment stability.

02. SHELTER

C@P operates a 38 bed young adult shelter for 18-24 year olds. The Young Adult shelter proves a safe, sanitary, and supported environment for guests to move from homelessness to stability.



03. STABILITY

Young Adults are able to stay in the shelter for up to 2 years and during that time are provided support and connection with the resources they need to stabilize and thrive. Through case management and on-site community partner connections, guests work towards identifying stable housing, employment, health, and behavioral health.

04. LAUNCH

C@P walks alongside Young Adults until they are ready to transition to the next stable place of living. Guests are provided mentorship and assistance to develop their long-term support systems outside of the shelter.



Partner with us.

✦ **ADOPT-AN-APPLIANCE:** donate the funds individually or with a group for an appliance to make the commercial kitchen a reality!

- Cooler/Freezer - \$66,000
- Food Grills - \$44,000
- Dishwasher - \$32,000
- Baking Ovens - \$31,000
- Soup Skillet - \$20,000
- Shelves & Storage - \$10,000
- Mixers - \$8,000
- Tables - \$6,000
- Pots & Pans - \$5,000
- Carts - \$1,000

✦ **OFFER OPPORTUNITIES:** provide mentorship and/or paid internships to the young adults seeking career counsel and skill development opportunities.

✦ **BECOME A MEAL PARTNER:** provide regular home cooked meals for the young adults on-site.